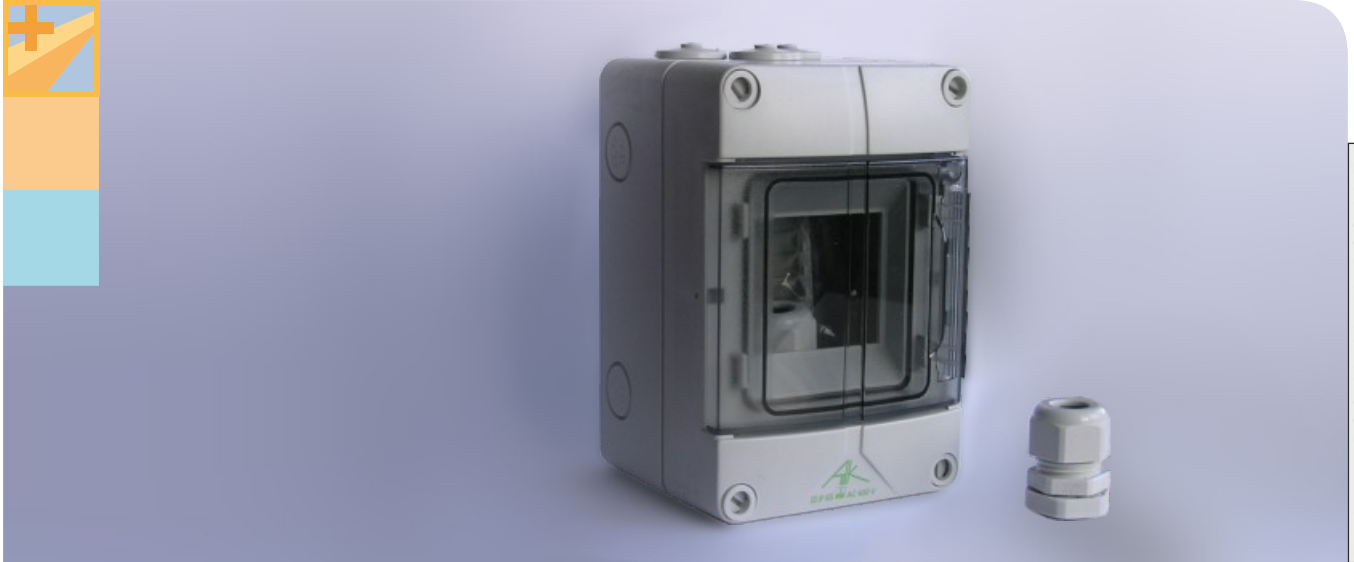
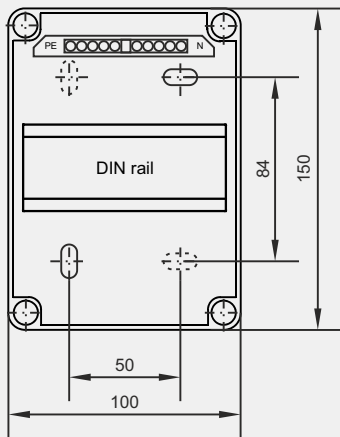


Enclosure BSG 12, 32, 42 and BSG 20 Ex - for lightning arrestor or surge diverter (DataPro, SonicPro and EnerPro)



Enclosure BSG 12, 32, 42, BSG 20 Ex

BSG 12

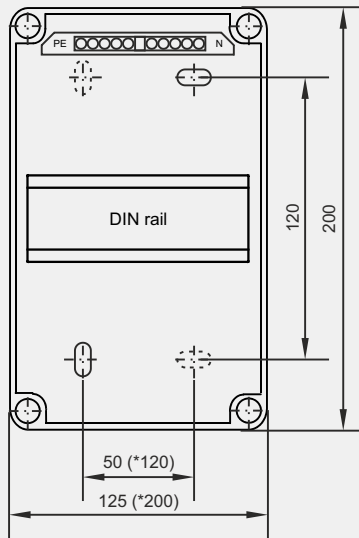


Lightning arrestor enclosure BSG 12 (IP65)

for max. 3 pcs. of diverter devices type DataPro, SonicPro or EnerPro.
 Dimensions: 100 x 150 x 100 mm (w x h x d)

Perforated cable inlets:
 right 2 x M20/PG13.5
 left 2 x M20/PG13.5
 top 3 x M20/25
 bottom 2 x M20/25

BSG 32 / BSG 42



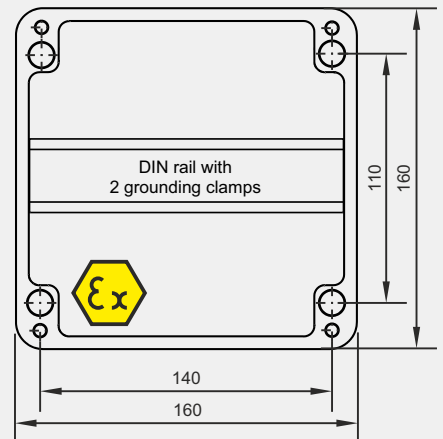
Lightning arrestor enclosure BSG 32 (IP65)

for max. 4 pcs. of diverter devices type DataPro, SonicPro or EnerPro.
 Dimensions: 125 x 200 x 125 mm (w x h x d)

***Lightning arrestor enclosure BSG 42 (IP65)**
 for max. 9 pcs. of diverter devices type DataPro, SonicPro or EnerPro.
 Dimensions: 200 x 200 x 125 mm (w x h x d)

Perforated cable inlets:
 right 2 x M20/PG13.5
 left 2 x M20/PG13.5
 top 2 x M20/13.5, 1 x M25/32
 bottom 8 x M20/13.5, 1 x M25/32

BSG 20 Ex



Lightning arrestor enclosure BSG 20 Ex (IP67)

for max. 3 pcs. of surge diverter devices type DataPro, SonicPro or EnerPro
 Dimensions: 160 x 160 x 125 mm (w x h x d)

Cable inlets:
 top 2 x M16
 bottom 2 x M16

Enclosures shown in open condition.
 Dimensions in mm