

Data Import – from NivuDat to NivuSoft

It is possible to directly import measurement data from NivuDat to NivuSoft.
However the new NivuDat32 needs to be installed first.

Please proceed as follows:

- Install "**NivuDat32**" supplied on CD.
Alternatively this version can be downloaded from Internet www.nivus.com
(Download – Software - ...)
- In the NivuDat32 directory replace the folder "**RUEBDATA**" as well as the file "**NivuDat**"
(**file type: configuration settings**) by the one of the previously existing NivuDat directory.
The NivuDat directories can be found in C:\Programme\NivuDat and C:\NivuDat32 if not stated otherwise during installation.

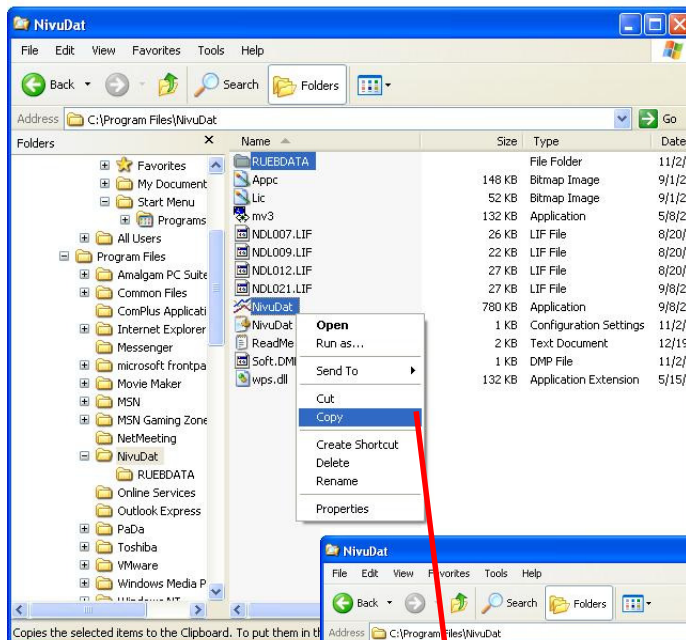


Fig. 1:
Copy "RUEBDATA"
and "NivuDat"
from existing NivuDat

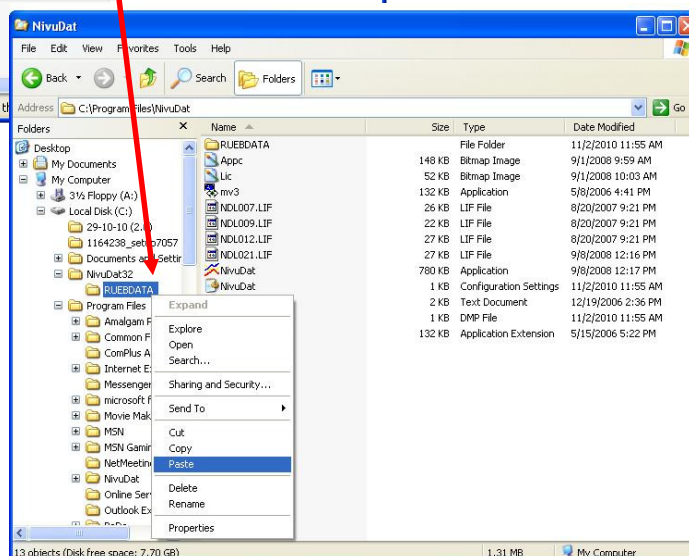


Fig. 2: Add „RUEBDATA“ and „NivuDat“ to NivuDat32

The data import to NivuSoft can now be carried out by using NivuDat32.
For further details on how to proceed please refer to NivuSoft Software Instruction Manual
(Chapter 5.4.3.2).